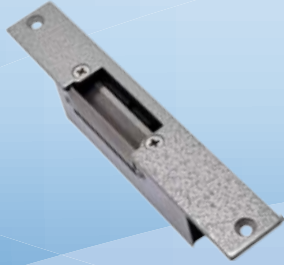


## Door Strikes

The Watchguard™ range of electronic door strikes feature tough, steel and stainless steel, convertible fail-safe/fail-secure, multi-voltage, and door/lock monitored models.



### Mortise Electronic Door Strike

Model:	ACLOC100
Dimensions	160 x 31 x 31.4 (mm)
Door Sensor	No
Face Plate	Steel
Keeper Depth	9.6 mm
Lock Configuration	Fail-secure
Lock Sensor	No
Power Input	12VDC at 400mA



### Surface Mount Electronic Door Strike

Model:	ACLOC101
Dimensions	108 x 50 x 31.4 (mm)
Door Sensor	No
Face Plate	Steel
Keeper Depth	9.6 mm
Lock Configuration	Fail-secure
Lock Sensor	No
Power Input	12VDC at 400mA



### Monitored Mortise Electronic Door Strike

Model:	ACLOC102
Dimensions	165 x 31 x 40.2 (mm)
Door Sensor	Yes
Face Plate	Stainless steel
Keeper Depth	12.7 mm
Lock Configuration	Convertible: Fail-safe / Fail-secure
Lock Sensor	Yes
Power Input	12VDC at 260mA



### Monitored Multi-Voltage Mortise Electronic Door Strike

Model:	ACLOC103
Dimensions	175 x 29 x 26 (mm)
Door Sensor	Yes
Face Plate	Stainless steel
Keeper Depth	10.8 mm
Lock Configuration	Convertible: Fail-safe / Fail-secure
Lock Sensor	Yes
Power Input	12/24VDC at 280/140mA 12/24VAC at 170/85mA



### Chrome Mortise Electronic Door Strike

Model:	ACLOC104
Dimensions	144.5 x 36.4 x 25 (mm)
Door Sensor	No
Face Plate	Chrome-plated steel
Keeper Depth	9.6 mm
Lock Configuration	Fail-secure
Lock Sensor	No
Power Input	12VDC at 400mA